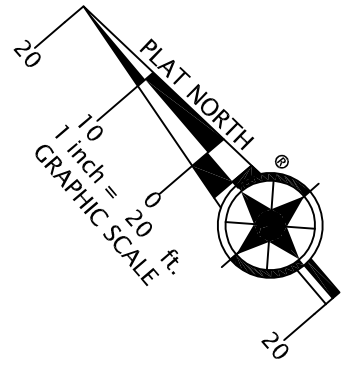
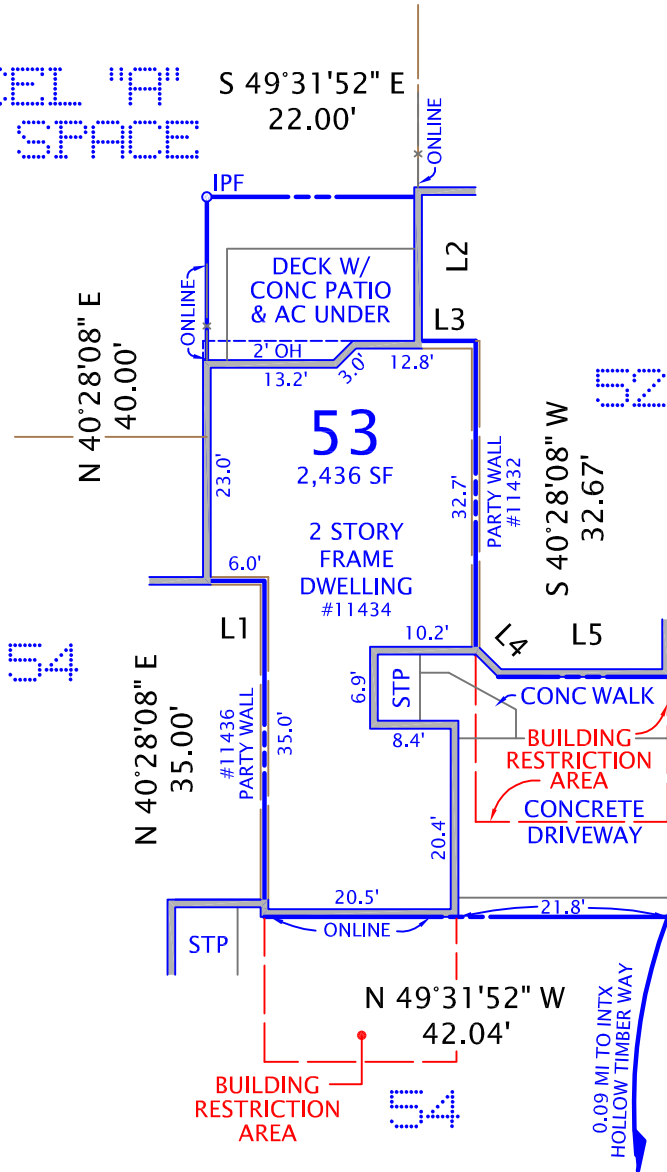


- NOTES: 1. FENCES ARE FRAME.
 2. UTILITIES ARE UNDERGROUND.
 3. EASEMENT FOR INGRESS AND EGRESS, CONSTRUCTION, MAINTENANCE OF UTILITIES, COUNTY AND OTHER EMERGENCY VEHICLES.



PARCEL "A"
 OPEN SPACE



LINE TABLE		
LINE	BEARING	LENGTH
L1	N 49°31'52" W	6.00'
L2	S 40°28'08" W	15.00'
L3	S 49°31'52" E	6.00'
L4	S 04°31'52" E	3.30'
L5	S 49°31'52" E	17.67'

COPYRIGHT BY DOMINION SURVEYORS, INC. THE INFORMATION CONTAINED ON THIS DOCUMENT MAY NOT BE COPIED, REPRODUCED OR ALTERED IN ANY FORM WITHOUT PERMISSION IN WRITING FROM THE COPYRIGHT OWNER.

PLAT
 SHOWING HOUSE LOCATION ON
 LOT 53, BLOCK 1, SECTION 61

RESTON

(DEED BOOK 7542, PAGE 411)

FAIRFAX COUNTY, VIRGINIA

HUNTER MILL DISTRICT

SCALE: 1" = 20'

OCTOBER 7, 2019

I HEREBY CERTIFY THAT THE POSITIONS OF ALL THE EXISTING IMPROVEMENTS HAVE BEEN CAREFULLY ESTABLISHED BY A CURRENT FIELD SURVEY AND UNLESS SHOWN THERE ARE NO VISIBLE ENCROACHMENTS AS OF THIS DATE:

THIS PLAT IS SUBJECT TO RESTRICTIONS OF RECORD.
 A TITLE REPORT WAS NOT FURNISHED.
 NO CORNER MARKERS SET.



ORDERED BY:

TERESA TOMPKINS



8808-H PEAR TREE VILLAGE COURT
 ALEXANDRIA, VIRGINIA 22309
 703-619-6555
 FAX: 703-799-6412